



INDOFINE Chemical Company, Inc.

121 Stryker Lane, Bldg. 30, Suite 1 • Hillsborough, NJ 08844 • U.S.A.

Phone: (908) 359-6778 • FAX: (908) 359-1179

website: www.indofinechemical.com

e-mail: chemical@indofinechemical.com

CERTIFICATE OF ANALYSIS

Catalog Number: 021104S

Product name: **CHRYSOERIORL WITH HPLC**
(4',5,7-Trihydroxy-3'-methoxyflavone)

CAS Number: [491-71-4]

Lot Number: 2403918

Chemical Formula: $C_{16}H_{12}O_6$

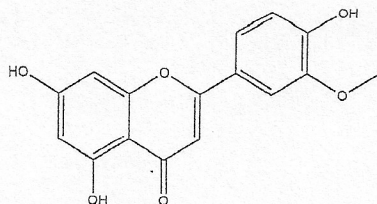
Molecular Weight: 300.27

Appearance: Green powder

Water Content: 0.9%

Storage: Store in a cool, dry place

Purity(HPLC): 98.6%



Prepared by:
Ramesh Mandadi
Ramesh Mandadi
Director of Operations

Reviewed and Approved by:
Sujata Moton
Sujata Moton
VP



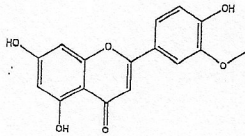
INDOFINE Chemical Company, Inc.

121 Stryker Lane, Bldg. 30, Suite 1 • Hillsborough, NJ 08844 • U.S.A.

Phone: (908) 359-6778 • FAX: (908) 359-1179

website: www.indofinechemical.com

e-mail: chemical@indofinechemical.com



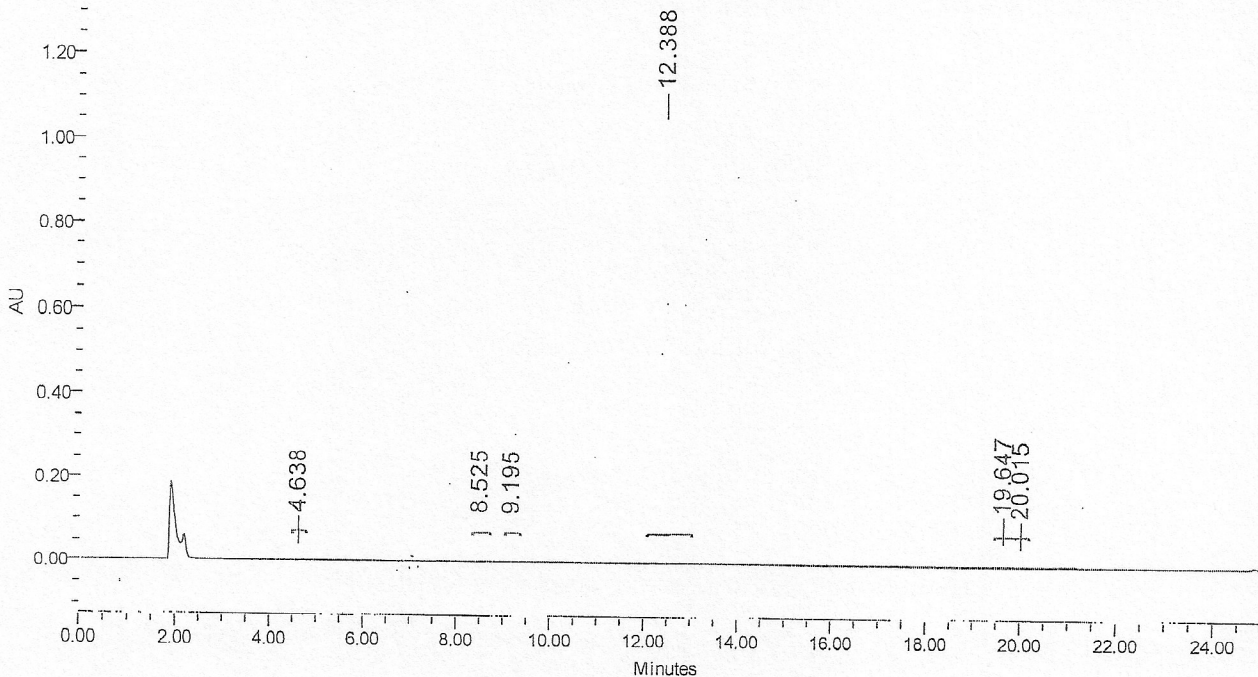
HPLC ANALYSIS

Catalog No.: 021104S
Product Name: Chrysoeriol
Lot No.: 2403918

SAMPLE INFORMATION

Sample Name: Chrysoeri
Sample Type: Unknown
Vial: 86, 65
Injection #: 1
Injection Volume: 5.00 ul
Run Time: 25.0 Minutes

Acquired By:
Sample Set Name
Acq. Method Set: Chrysoeriol
Processing Method: sample
Channel Name: PDA Ch1 251nm@4.8nm
Proc. Chnl. Descr.: PDA Ch1 251nm@4.8nm



Peak Results

	RT	Area	% Area	Height (µV)	USP Plate Count	USP Resolution
1	4.638	2781	0.04	515	17689.39	
2	8.525	18317	0.23	3016	48757.40	28.14
3	9.195	3964	0.05	594	51191.04	4.07
4	12.388	7827398	98.58	1019721	68164.09	17.42
5	19.647	81491	1.03	12272	223971.79	39.84
6	20.015	6208	0.08	1104	310545.33	2.34
7						